



## APT-50 5.5" ANDROID PAYMENT TERMINAL



## 5.5" SMART POS/ PAYMENT TERMINAL

Time to upgrade your business from those old, bulky payment terminals of the past and get TEAMSable's new generation smart terminal. The APT-50 is a revolutionary device that can be used as a stand-alone mobile POS/payment terminal, or it can be semi-integrated with a traditional POS system. Our forward-thinking smart terminal is ideal for hassle free pay-at-the-table and line busting applications, for example, due to its large 5.5" touchscreen, onboard thermal printer and EMV/MSR/NFC card reader functionality. This latest best-of-breed terminal is Android OS operated, allowing the installation of certified POS Apps that can expand the unit's functionality and decrease cost of ownership. Bottom line...the APT-50 is the perfect choice for today's modern merchant looking for a versatile, secure payment solution with easy POS system integration whether for mobile or stationary applications.

### APT-50 Smart Terminal Features at a Glance:

- Durable 5.5" PCAP Touchscreen
- Responsive 1.2GHz Quad Core CPU
- Snappy Performance 1G DDR3
- Ample 8GB Flash Storage Capacity

## FEATURES



Integrated MSR



Integrated EMV Reader



Built-in Printer



Charging Dock



[www.teamsable.com](http://www.teamsable.com)

1911 Hartog Dr. San Jose, CA 95131



1-408-775-8384



[sales@teamsable.com](mailto:sales@teamsable.com)



# Certification and Software

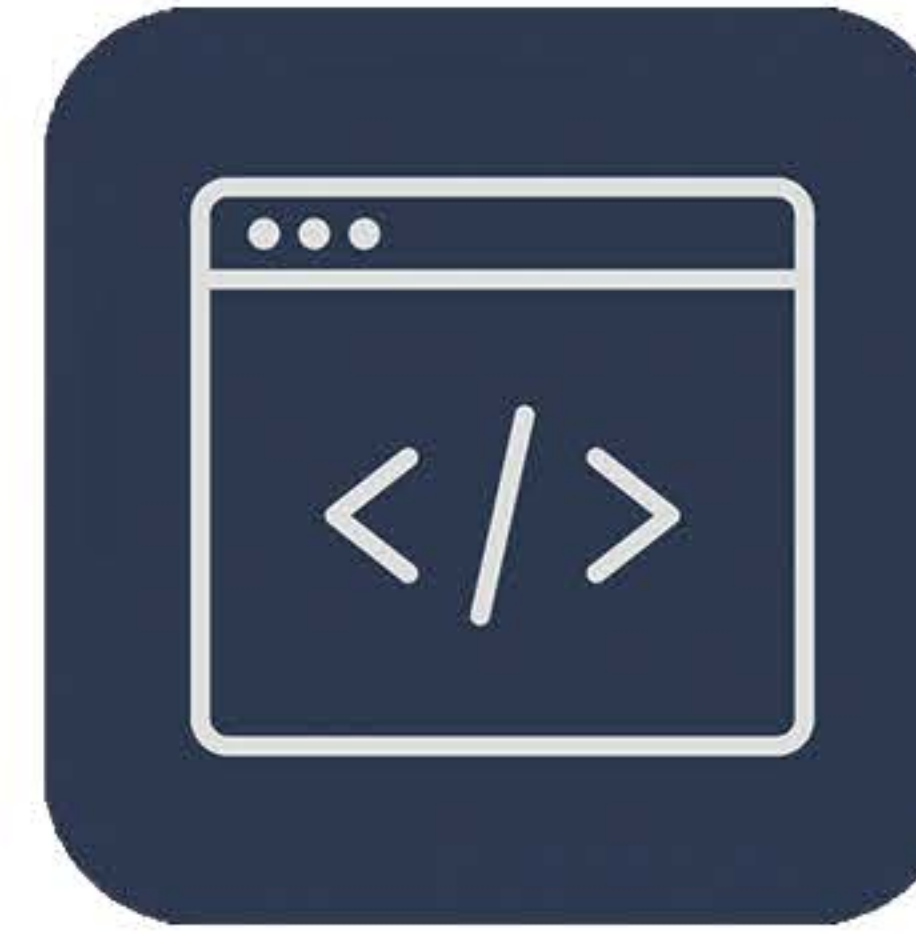
- Supports Major Payment Processors
- PCI 4.X & EMV L3 Certified
- Payment APK Available
- Windows API Available
- Android SDK Available



**Certified  
EMV & PCI**



**Supports  
Major Processors**



**Windows  
API Available**



**Android  
SDK Available**



## APT-50

| CPU and Memory               |  | Terminal Ports             |                               |
|------------------------------|--|----------------------------|-------------------------------|
| Operating System             | Android 5.1  | Micro USB                  | USB OTG x 1                   |
| CPU                          | QuadCore 1.2Hz   | SIM Card                   | 1 Slot                        |
| Memory                       | 1GB DDR3   | PSAM Card                  | 1 Slot                        |
| Storage                      | 8GB eMMC   | Speaker                    | Support                       |
| TF Socket                    | Support up to 64GB   | Microphone                 | Support                       |
| <b>Display</b>               |  | Headset                    | 3.5mm Jack                    |
| Panel                        | 5.5" IPS 1280 x 800  | <b>Charging Dock Ports</b> |                               |
| Touch                        | 5 Point Capacitive   | Micro USB 2.0              | x1                            |
| <b>Wireless Connectivity</b> |  | SIM Slot                   | x1                            |
| WIFI                         | IEEE 802.11b/g/n,<br>WLAN 2.4GHz+5GHz                                | PSAM Slot                  | x2                            |
| Bluetooth                    | BLE 4.0 Dual Mode,<br>V4.0+EDR                                       | DC Socket                  | 2.5mm x 1                     |
| GPS                          | Built-in GPS   | <b>Power</b>               |                               |
| Cellular Module              | 3G and 4G  | Power Adapter              | Input 100-240V, Output 9.5/1A |
| <b>Card Reader</b>           |  | Charging Dock              | YES                           |
| Magnetic Reader              | Track 1/2/3, ISO7810&7811,<br>Bi-Directional,<br>PCI 4.X and EMV Co. | <b>Physical Dimension</b>  |                               |
| IC Chip                      | ISO 7816, Encrypted head,<br>PCI 4.X and EMV Co.                     | Size                       | 210x80x57mm                   |
| NFC                          | ISO/ IEC 14443, Type A&B   | Weight                     | 510g                          |
| <b>Camera</b>                |  | Operating Temperature      | -20°C - 60°C                  |
| Front Camera                 | 5M Pixel, AF,<br>Support to scan 1D, 2D<br>barcode                   | Storage Temperature        | -30°C - 80°C                  |
| Rear Camera                  | 5M Pixel, AF,<br>Support to scan 1D, 2D<br>barcode                   | Printer                    | Built-in-58mm Thermal Printer |