

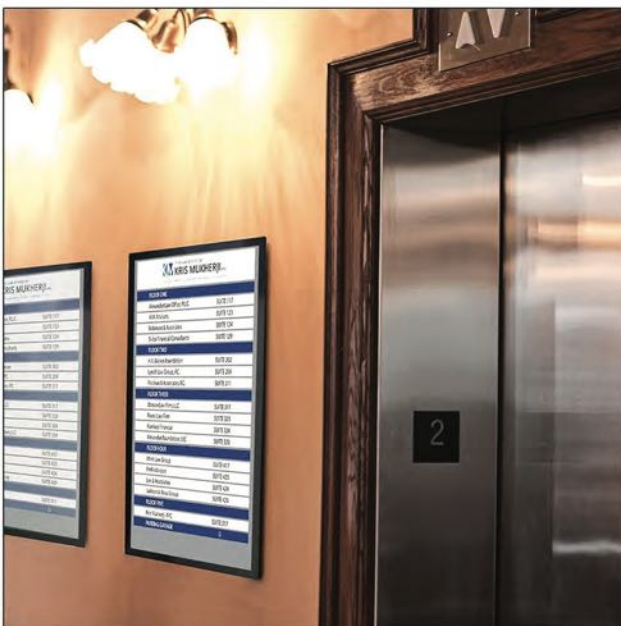


DIGITAL SIGNAGE

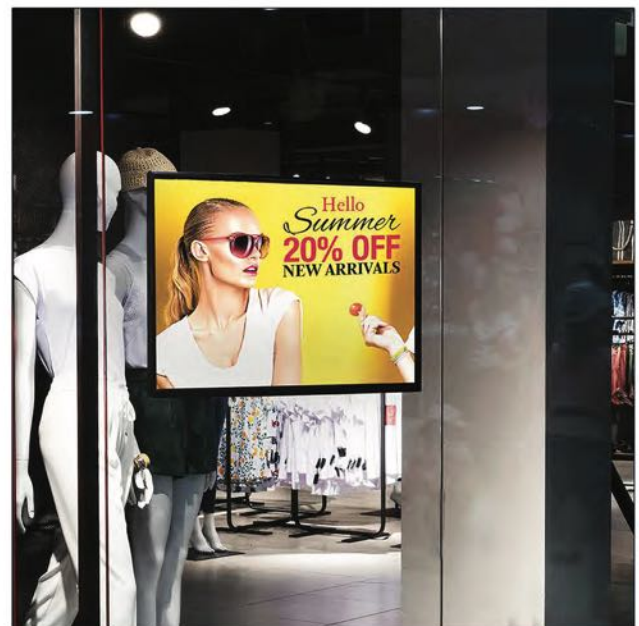
DIGITAL SIGNAGE

TEAMSable's POS digital signages utilize top-grade interactive touch-technology that is housed in a slim and integrated unit. Our digital displays are specially designed for use in a variety of markets such as: hospitality, healthcare, and retail. Bringing digital displays into your business opens up endless possibilities.

TEAMSable's POS digital signages can improve vital aspects of your business, from improving the effectiveness and efficiency of marketing, to increasing return on investment. Some popular uses include interactive menus, advertising and promotions, self-service, and to provide wayfinding information. Whether our interactive digital signages are used to educate your target audience about a product or help them find what they are looking for, the benefits of incorporating into your business are enormous. Distinguish your business from the rest today with TEAMSable's digital signages.



Provide information for your guests



Engage your customers with animated ads



43P-BW

43" TFT-LCD Display

- 1920x1080 Resolution (LED backlight)
- Intel® Celeron N3160 / Pentium N3710 CPU
- Support M2 upgradeable up to 128GB
- Intel® HD Graphics
- 10 point capacitive Touch Screen
- Windows Pos Ready 7 (64Bits), Win 10 IoT (64Bits)



32P-RM

32" LCD Panel Display

- 1920 x 1080 Resolution
- Cortex-A17, Quad Core, up to 1.6 GHz CPU
- 2GB/4GB DDR3 SDRAM/ up to 32GB eMMC
- SD Card slot for external storage.
- 10 point capacitive Touch Screen
- Android 9.0, Pie



27P-RM

27" LCD Panel Display

- 1920 x 1080 Resolution (LED Side-light)
- Cortex-A17, Quad Core, up to 1.6 GHz CPU
- 2GB/4GB DDR3 SDRAM/ up to 32GB eMMC
- Micro SD Card slot for external storage.
- 10 point capacitive Touch Screen
- Android 9.0, Pie



24P-AP

23.8" LCD Panel Display

- 1920 x 1080 Resolution (LED Backlight)
- Intel® Apollolake N3450 CPU
- 2.5" SSD / M-SATA 32G, 64G, 128G
- Intel® HD Graphics
- 10 point capacitive Touch Screen
- Win 10 IoT (64Bit)



22P-RM

21.5" LCD Panel Display

- 1920 x 1080 Resolution (LED Side-light)
- Cortex-A17, Quad Core, up to 1.6 GHz CPU
- 2GB/4GB DDR3 SDRAM/ up to 32GB eMMC
- SD Card slot for external storage.
- 10 point capacitive Touch Screen
- Android 9.0, Pie



15N-RM

15.6" LCD Panel Display

- 1920 x 1080 Resolution (LED Side-light)
- Cortex-A17, Quad Core, up to 1.6 GHz CPU
- 2GB/4GB DDR3 SDRAM/ up to 32GB eMMC
- SD Card slot for external storage.
- 10 point capacitive Touch Screen
- Android 9.0, Pie



13PB-RM

13.3" LCD Panel Display

- 1920 x 1080 Resolution (LED Side-light)
- Cortex-A17, Quad Core, up to 1.6 GHz CPU
- 2GB DDR3 SDRAM/ 8GB eMMC
- SD Card slot for external storage.
- 10 point capacitive Touch Screen
- Android 9.0, Pie



12P-RM

11.6" LCD Panel Display

- 1920 x 1080 Resolution (LED Side-light)
- Cortex-A17, Quad Core, up to 1.6 GHz CPU
- 2GB DDR3 SDRAM/ 8GB eMMC
- SD Card slot for external storage.
- 10 point capacitive Touch Screen
- Android 9.0, Pie



10P-RM

10.1" LCD Panel Display

- 1280 x 800 Resolution (LED Side-light)
- Cortex-A17, Quad Core, up to 1.6 GHz CPU
- 2GB DDR3 SDRAM/ 8GB eMMC
- SD Card slot for external storage.
- 10 point capacitive Touch Screen
- Android 9.0, Pie