

BTP-S80

Printer Driver Manual
Mac OS x

Introduction

This printer driver supports Mac OS X v10.5 or higher on Intel Macs.

1. Installing /Registering /Delete Printer Drivers

Notes: 1) Turn on the printer's power after performing "Installing Printer Drivers".
2) The printer with USB interface must be printer/WinDriver mode.

Place the xxx_MacDrv_EN Vx.xx.zip file on your windows OS and expand it.

If the printer is USB interface, confirm the printer mode firstly, if the mode is API mode, please run PrinterModeManager.exe in the PrinterModeManager.Vx.xx directory to change the mode to printer mode. The method refers to "4. Switching USB Mode".

1.1 Installing Printer Drivers

To install the driver, proceed as follows.

1. Place the xxx.pkg file downloaded via the website or other methods on your desktop or home directory in Mac and expand it by double-clicking on the file.

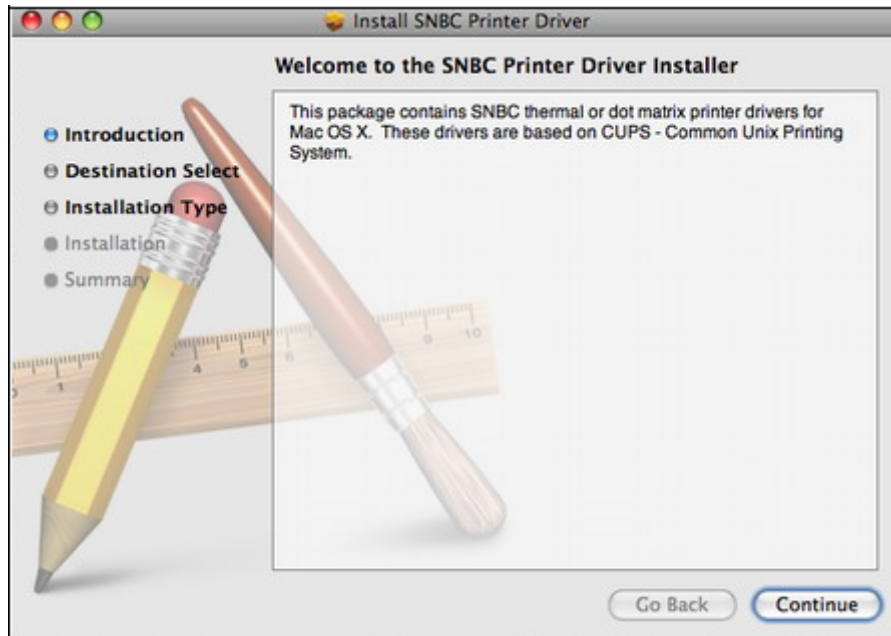
2. The screen below is displayed.

Double-click<xxx.pkg> to begin the installation.

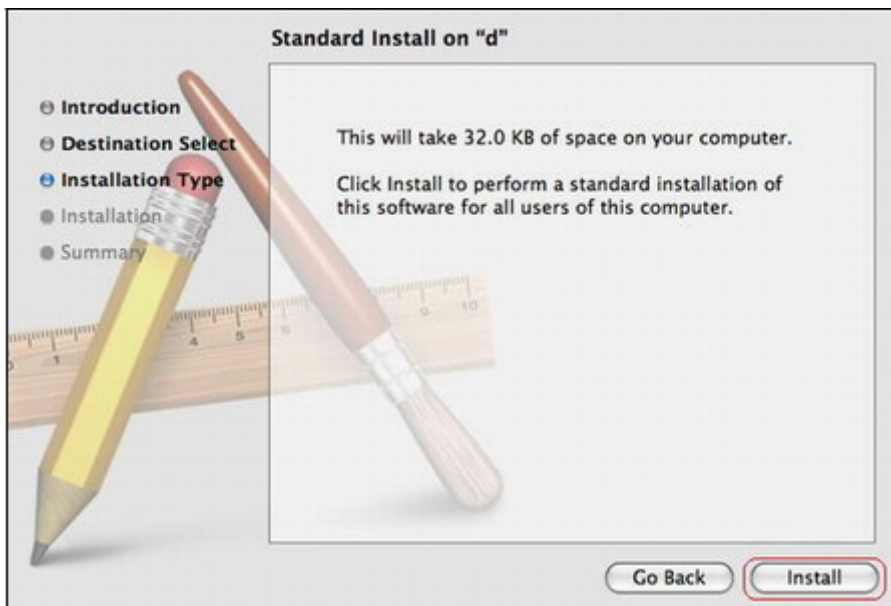


3. The following windows is displayed.

Click [Continue].



4. Click [Install] to start the installation.

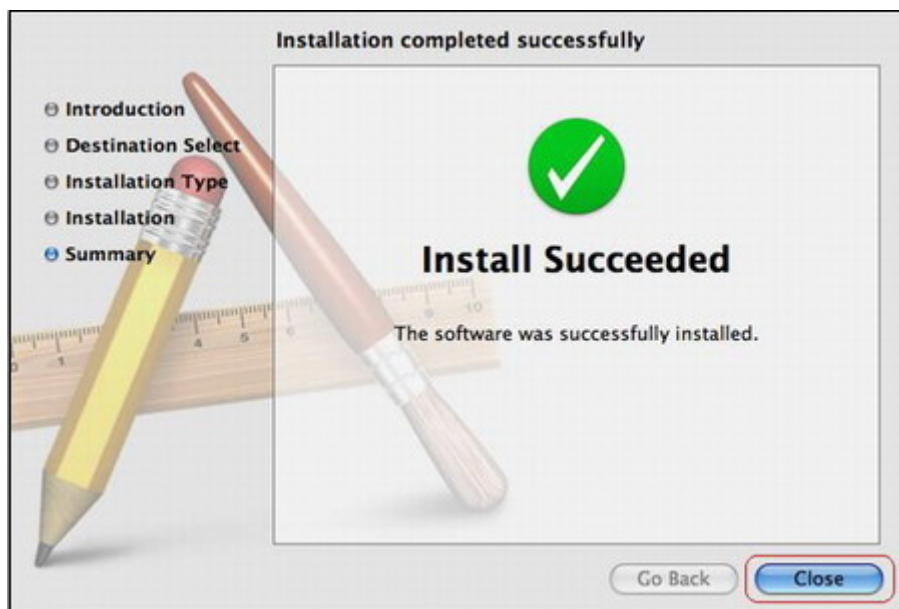


5. If the confirmation window shown below is displayed, enter the user name and password having administrator rights, then click [OK]



6. The installation ends successfully.

When the installation has ended successfully, the window shown below is displayed.
Click [Close].



1.2. Registering the Printer

Procedures for registering the printer differ according to the type of interface you use.
See the page relating to your environment.

1.2.1 When using a USB Interface

Cautions: When using a USB interface, turn on the printer's power before performing the following.

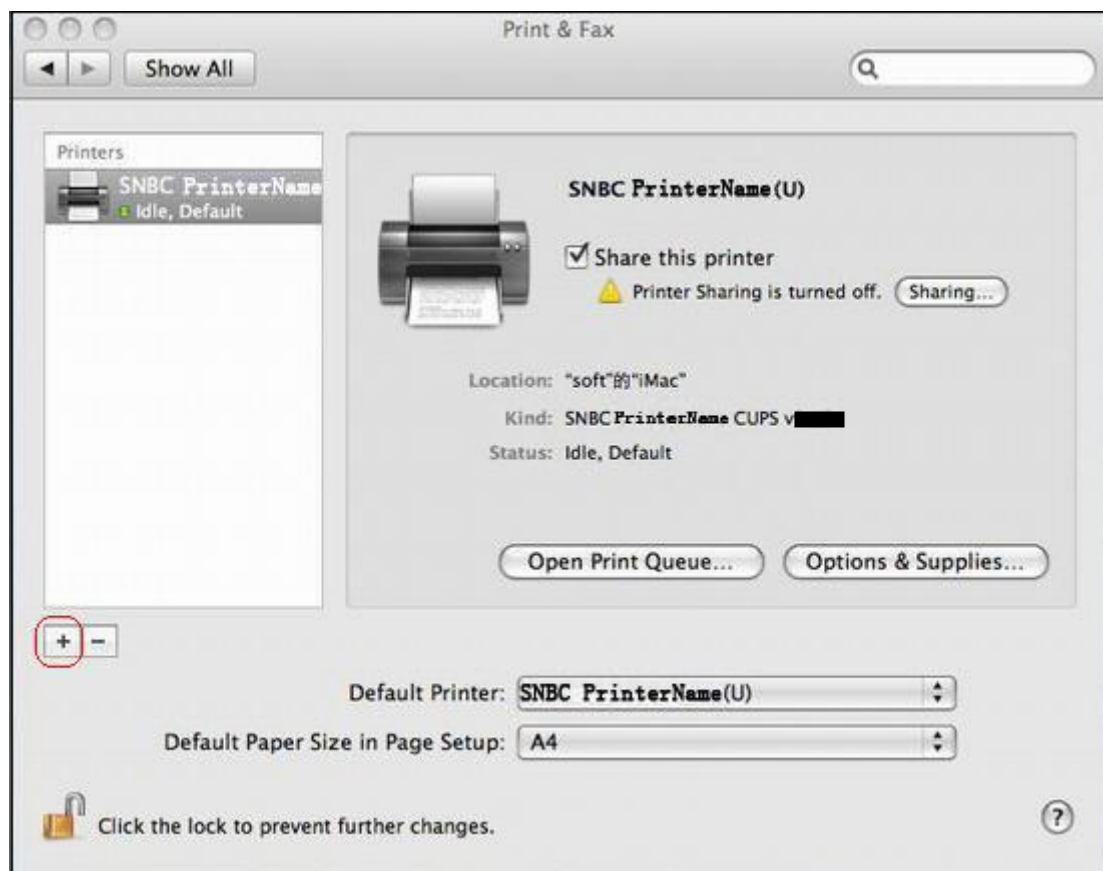
1. In the Apple mark in the menu bar, open [System Preferences] and double-click on the [Print & Fax] icon.



2. Connect the printer, and then turn on the printer's power switch.

The Plug and Play feature detects the connection of the printer hardware and automatically installs the driver software.

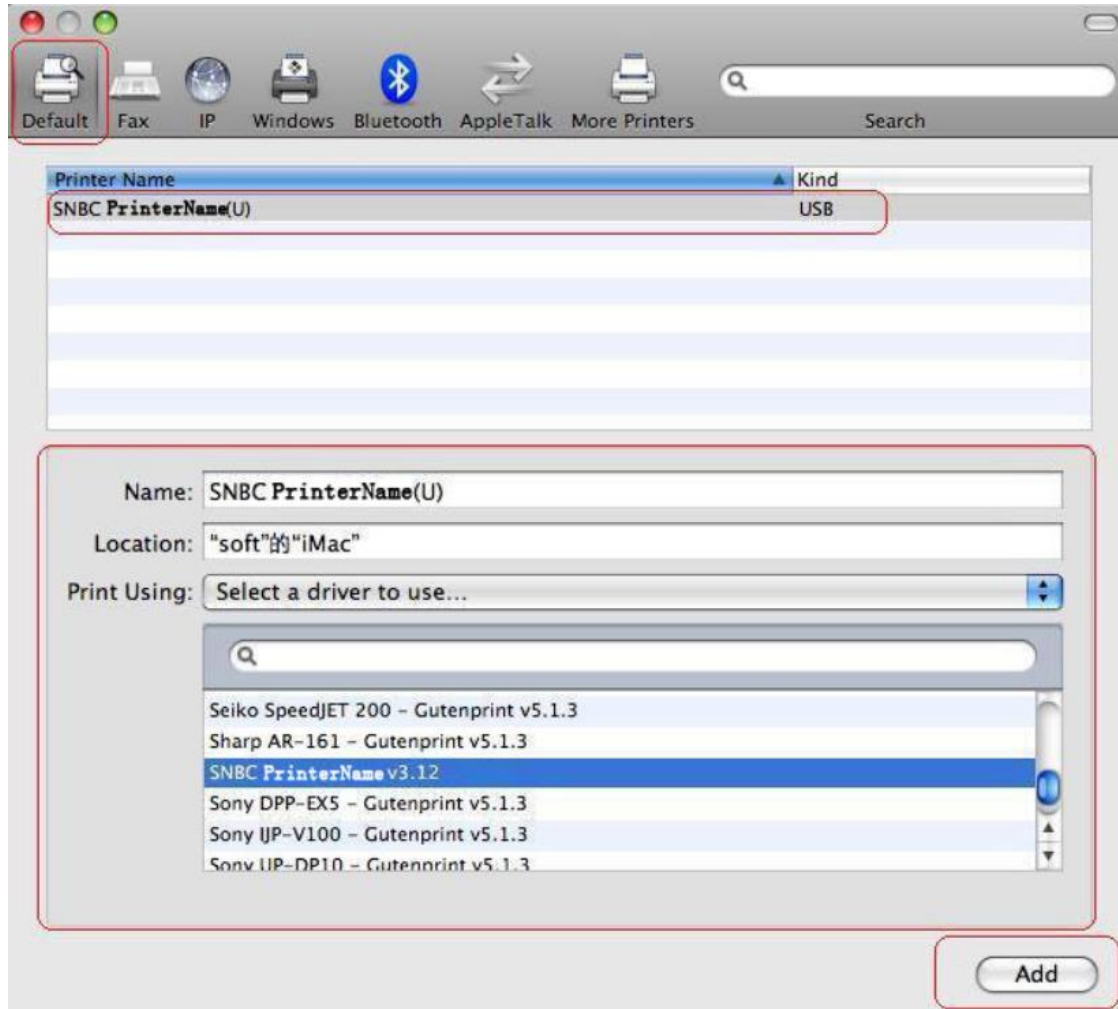
3. Click [+] to install the printer driver.



4. Select the USB printer created using plug-and-play from the "Default Browser," make the following settings and click [Add].

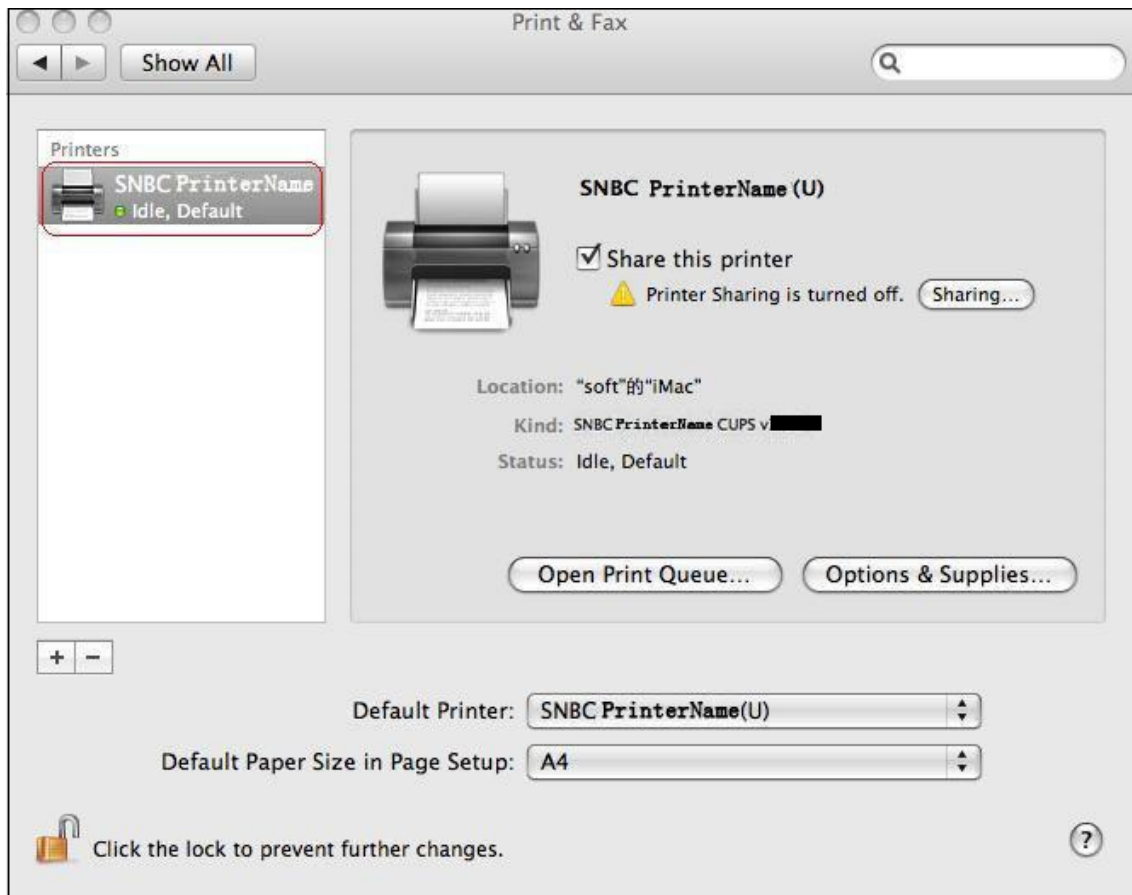
Name: Arbitrary character string (change the name from the name of the receipt driver displayed.)

Print Using: Select the driver to use....(Select a driver to use...)



5. If the name of the specified printer is added to the printer list, the printer has been added.

if necessary, return to #3 above and added all the required printer drivers.

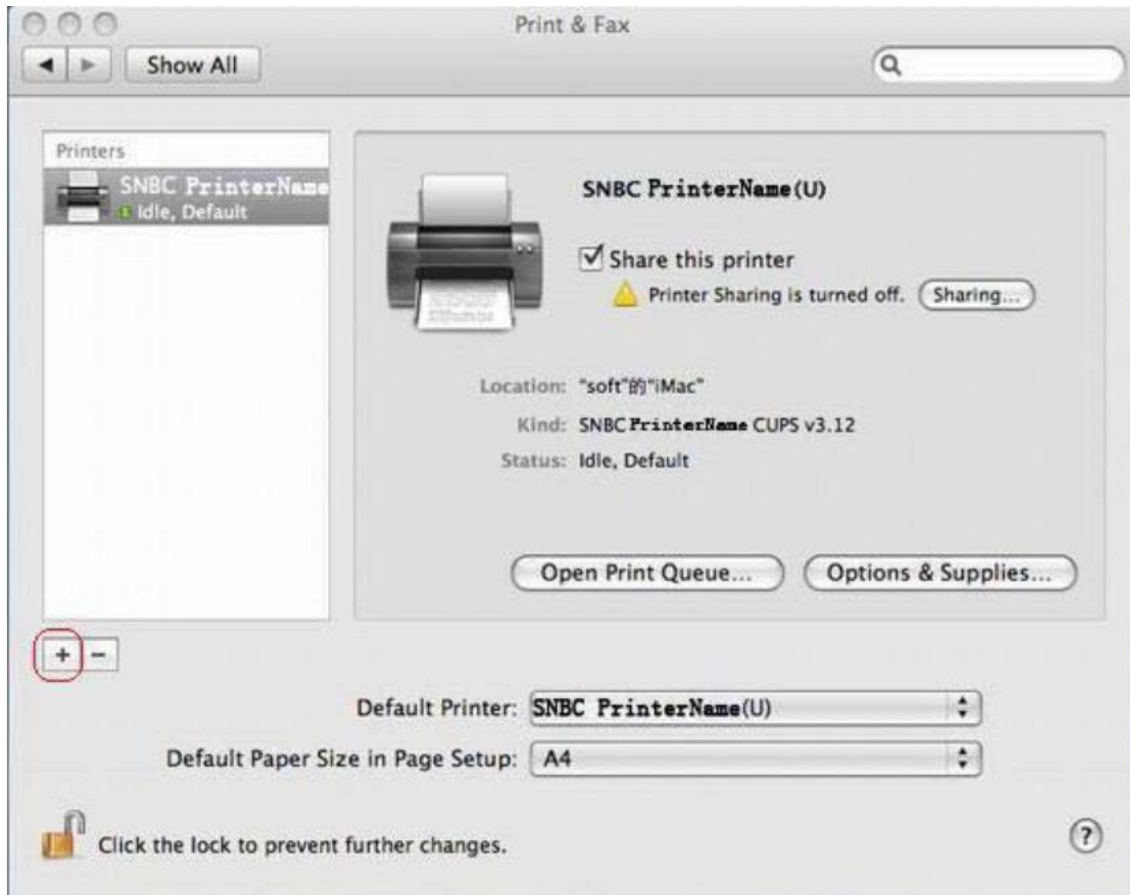


1.2.2 When using Ethernet Interface

1. In the Apple mark in the menu bar, open [System Preferences] and double-click on the [Print & Fax] icon.



2. The Print & Fax window appears. Click on [+].



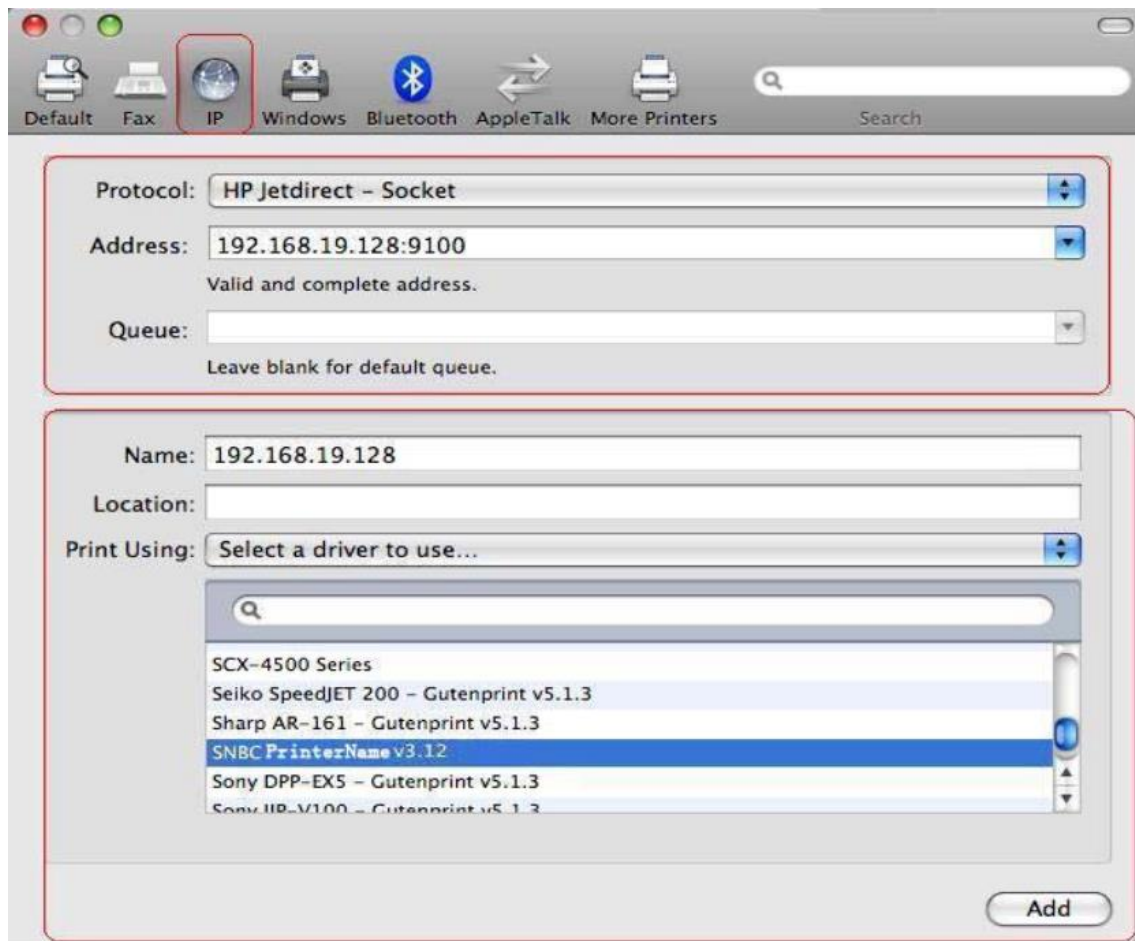
3. Using port 9100, set the following.

Protocol: HP Jet Direct-Socket

Address: [IP address of printer being set]:9100

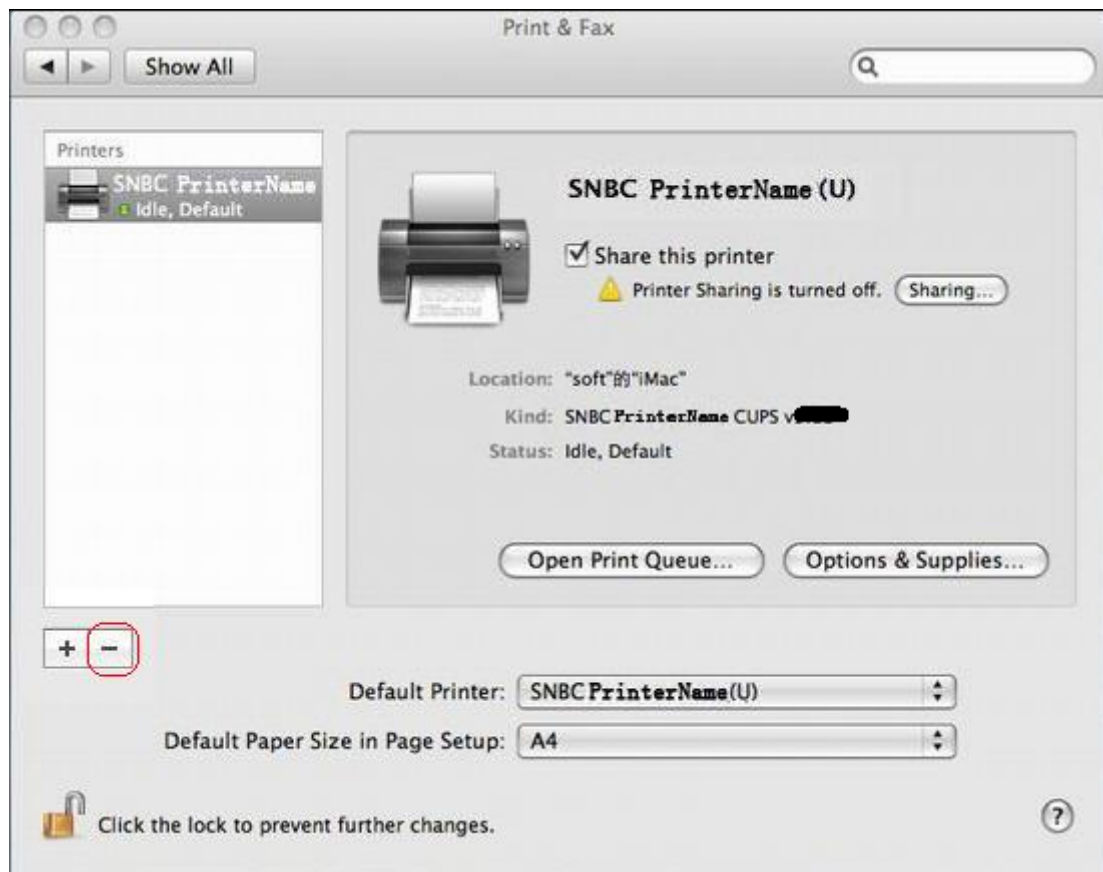
Print Using: Select the driver to use.

Select a driver to use.



1.3 Delete Printer Drivers

Click on [-] to delete the installed printer driver in Print & Fax window.

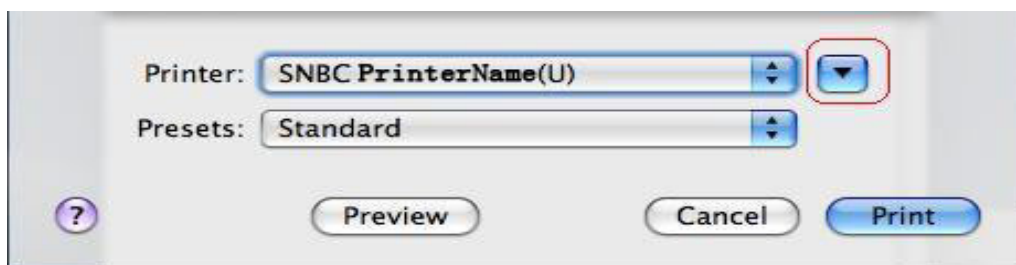


2. Setting the Printer Functions

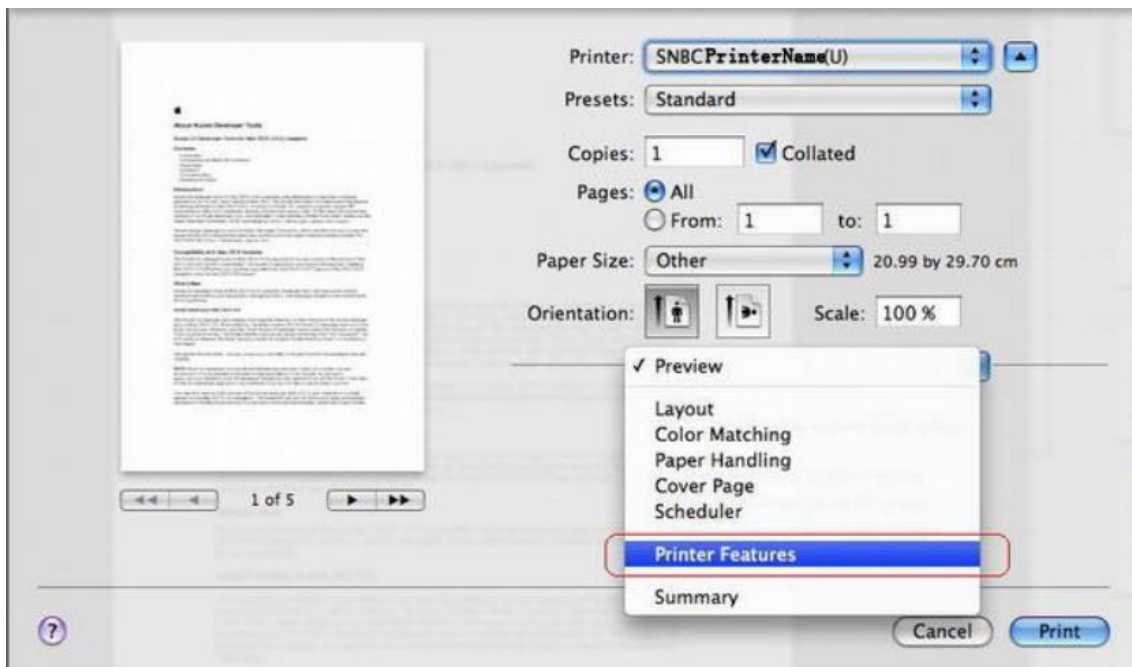
Notes: The method of setting the printer functions under different Mac OS may be different.

Use the dialog box opened by [File]->[Print] in the Mac OS X menu.

From the "Printer:" pull-down menu, select the printer name to set, the click[▼] to display the details.

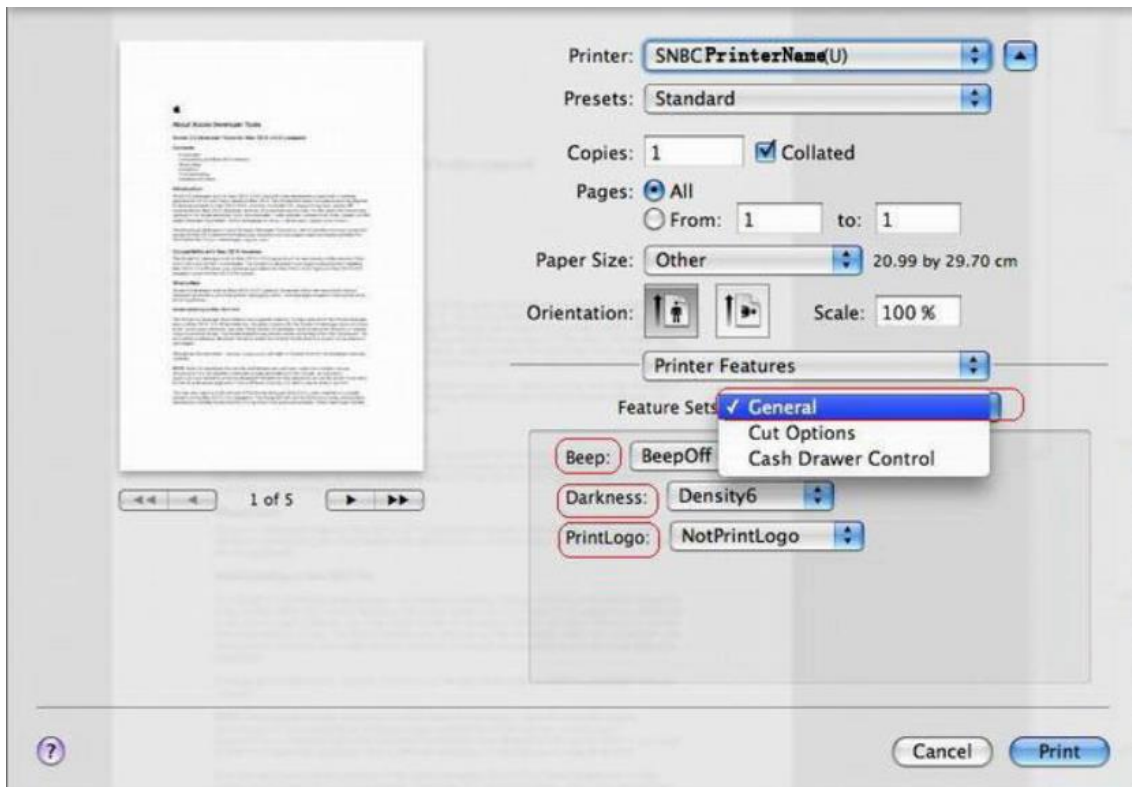


Select "Printer Features" from the setting pull-down menu.

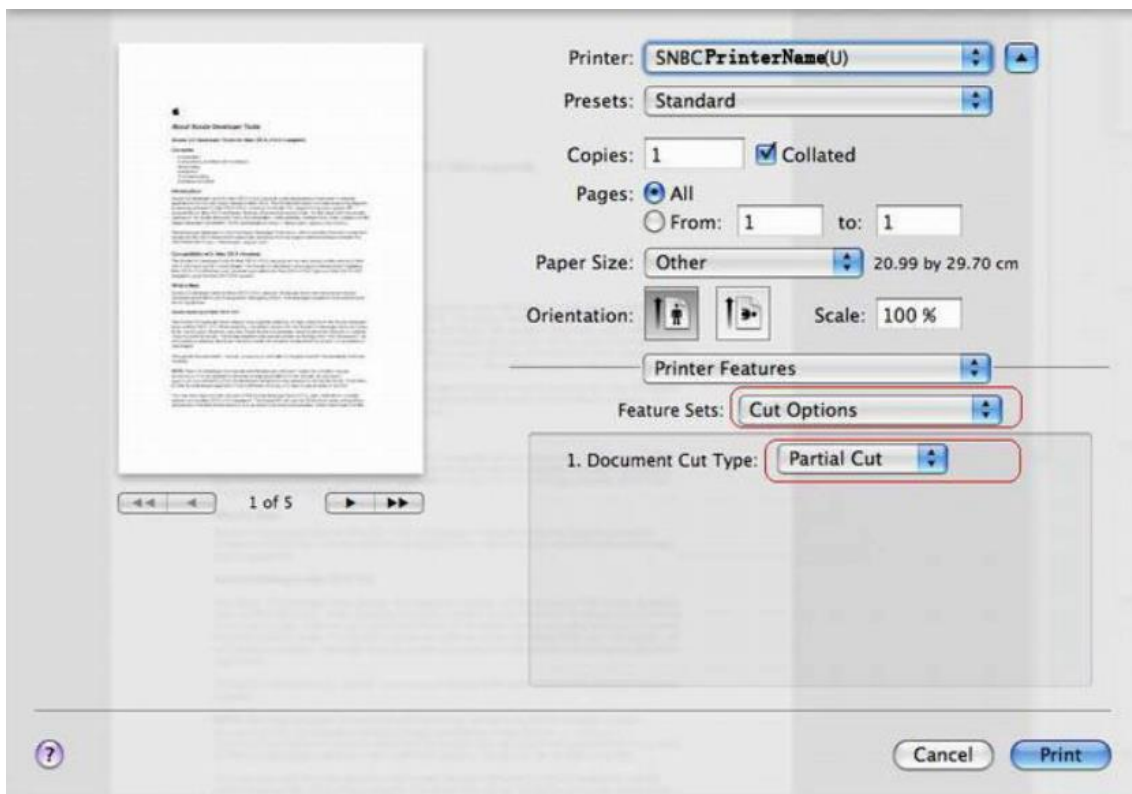


"Feature Sets:" Selects function that make settings.

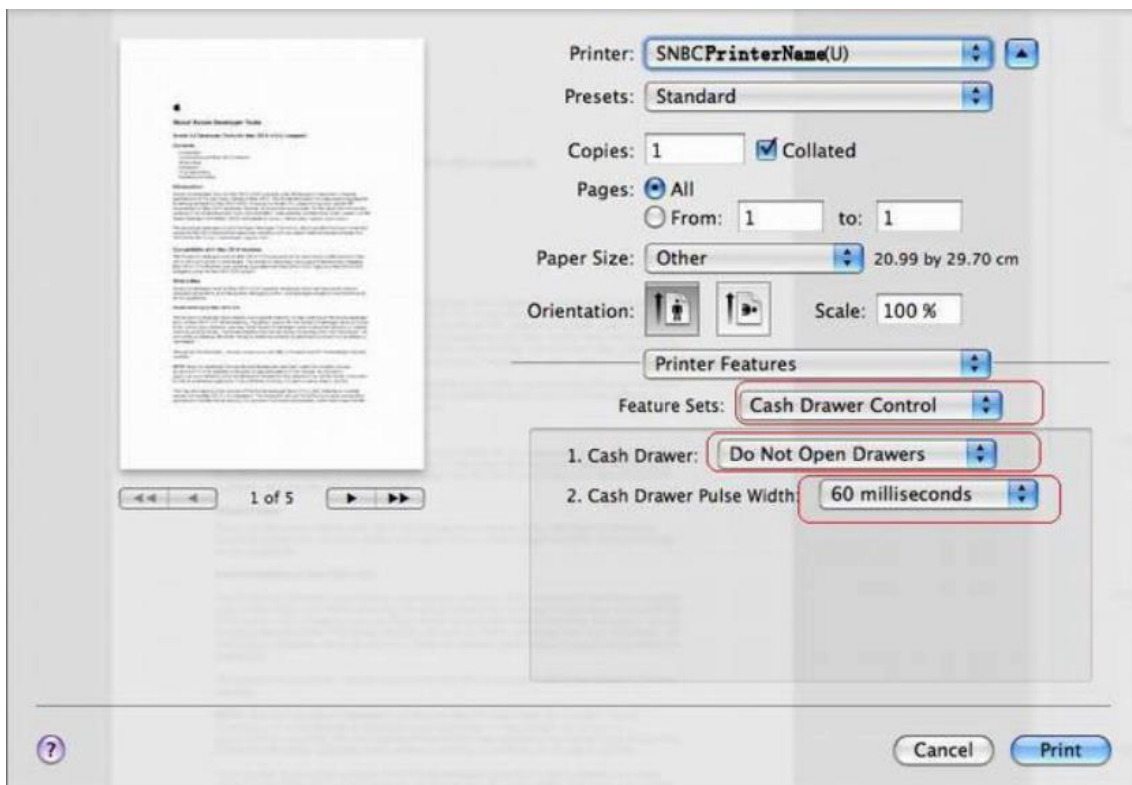
There are these settings: Beep, Darkness, PrintLogo, when select "General" .



Cut Type when select "Cut Options".



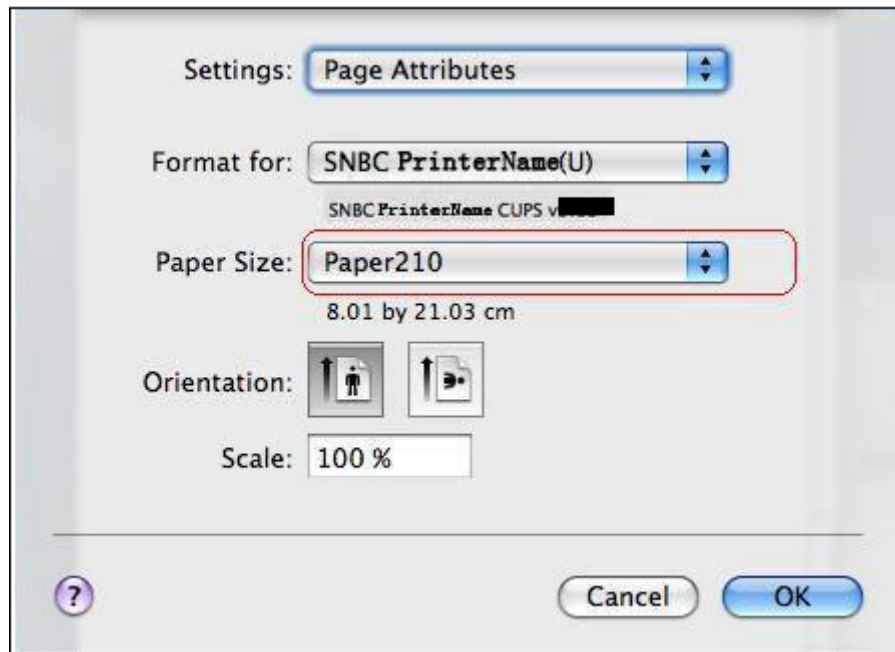
Cash Drawer settings when select "Cash Drawer Control".



3. Setting the Paper Size

Notes: The method of setting the paper size under different Mac OS may be different. With OS 10.5 from the menu bar on Mac OS X, open [File]->[Page Setup].

Select the paper size from the Paper Size pull-down menu.



4. Switching USB Mode

There are two ways to change USB mode: button configuration function and PrinterModeManager tool.

4.1 PrinterModeManager Tool

Refer to the following process to change USB API mode to Printer/WinDriver mode with button configuration function.

- 1) The interface of the printer must be USB interface.
- 2) Connect the power of your printer, if the printer is power on, please switched it off;
- 3) Press and hold the feed paper button while you switched the printer on, the printer will print "MAIN MENU", otherwise the printer not support button configuration function.
- 4) Select "Configuration", operate according to the explain of MAIN MENU.
- 5) Select "Communication", operate according to the explain of MAIN MENU.
- 6) Select "WinDriver Mode", operate according to the explain of MAIN MENU.
- 7) The USB mode will be WinDriver mode, restart the printer so that the changes can take effect.

4.2 Button Configuration Function

Change USB printer to "Printer/WinDriver Mode" in PrinterModeManager tool in 32 bits Windows.

1) Connect USB printer to the computer.

2) Run "xxx_MacDrv_ENVx.xx\PrinterModeManagerVx.xx\

PrinterModeManager.exe ", click "Printer Mode" button, then repower the printer.

3) If the system pop-up a "Found New Hardware Wizard" dialog, click "Cancel" button to cancel it.

5. Appendix

5.1 OS 10.11 and above version of the installation of the printer driver need to close the rootless.

The purpose of Rootless design is to protect the security of system files stored in the root directory.

Install the printer driver before you need to close the rootless, enter the administrator password, restart the computer, install the printer driver, open rootless.

Method of closing rootless: csrutil disable;

Method for activating Rootless: csrutil enable;

Query Rootless protection status: csrutil status.

6. Revision History

Installer Version1.0

Release date: 3/31/2017(MM/DD/YYYY)

Printer firmware version: FV1.000 or higher

Changes: First release